

JCM REDD+ Model Projects by Ministry of the Environment, Japan

REDD+ project in Luang Prabang Province through controlling slash-and-burn



Marubeni



Mitsubishi UFJ Research and Consulting



Japan Forest Technology Association

1. General information on the project site

■ The project site is

Houaykhing village cluster (HK-VC), Phonsay district, Luang Prabang Province (LPQ) in northern Lao PDR.

- Area: about 30,000 ha
- Altitude: 667m to 1,657m

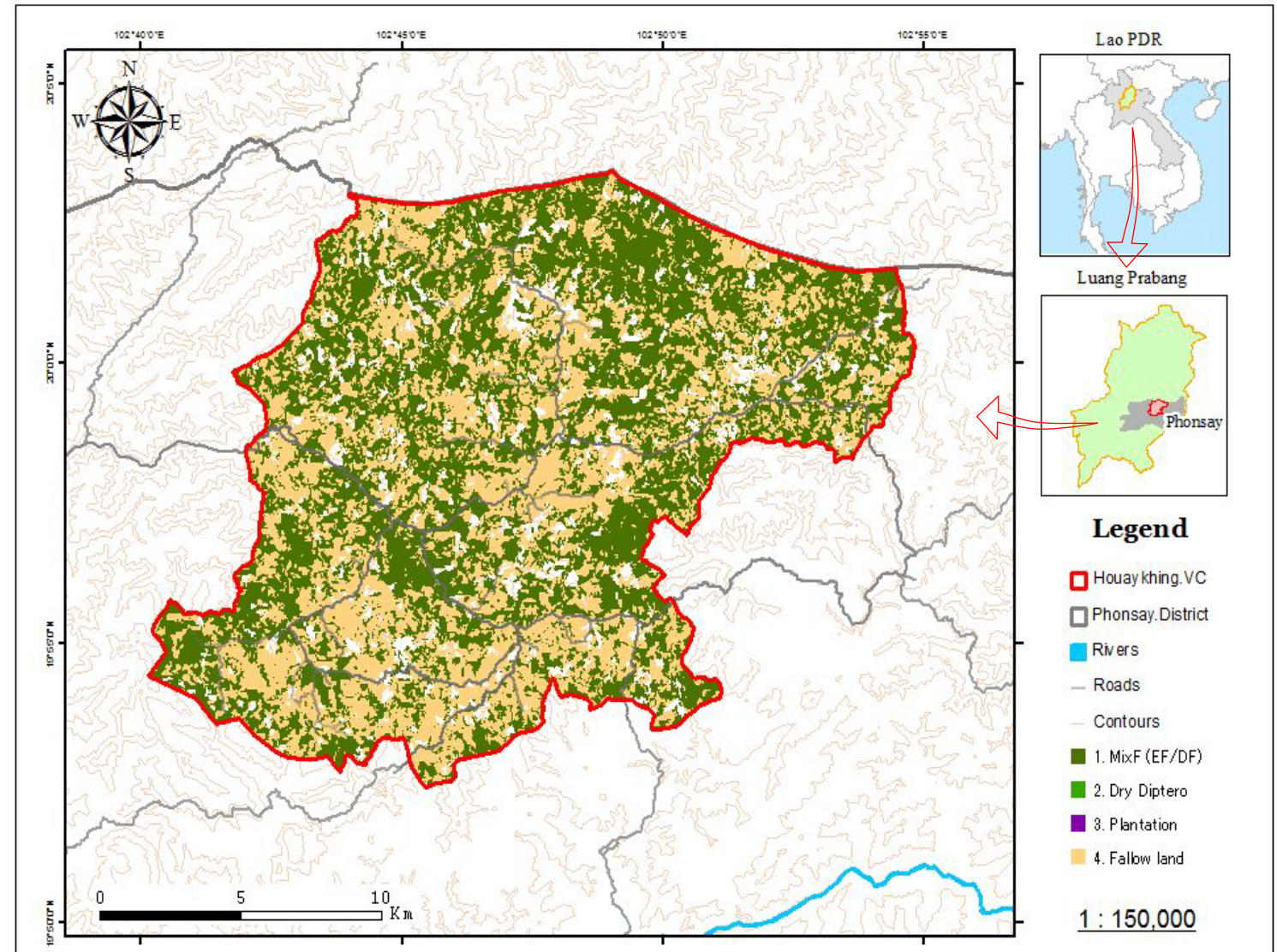
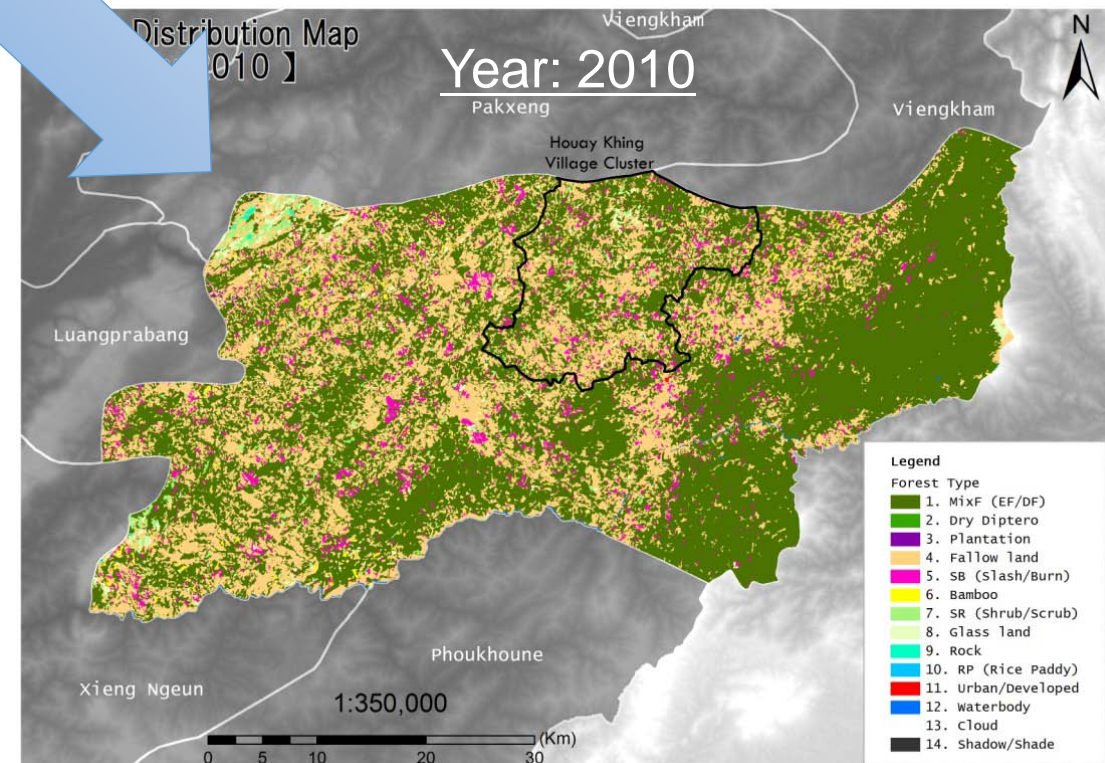
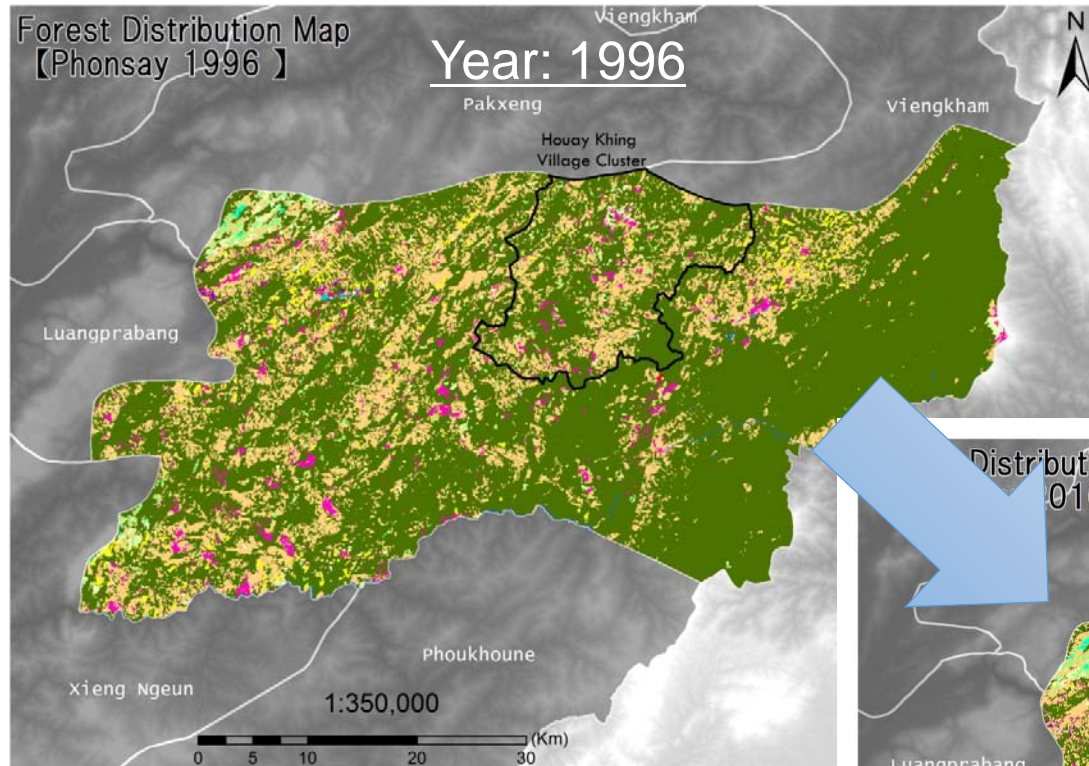


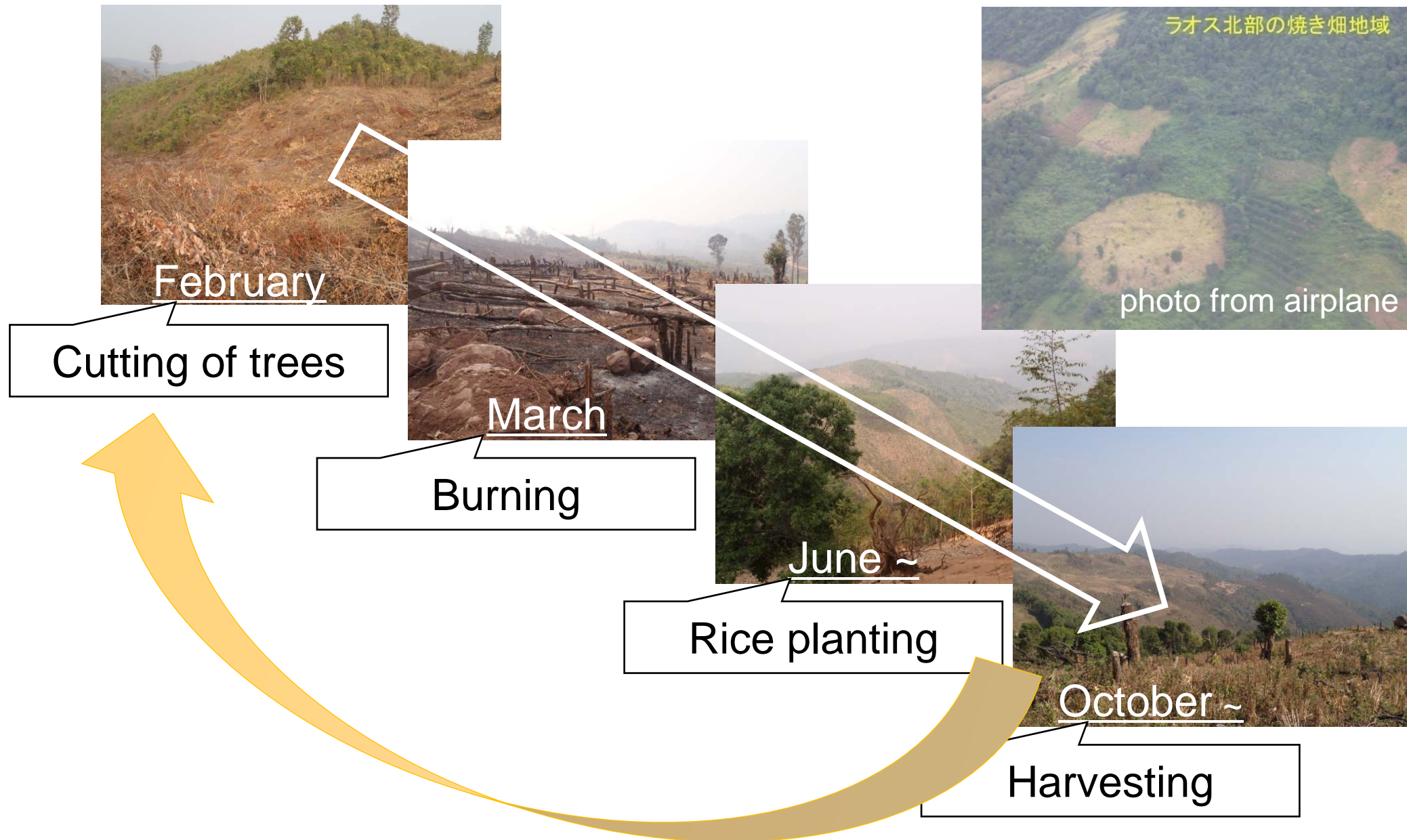
Figure 1. Location of the project site

2. Changes in forest cover before the project



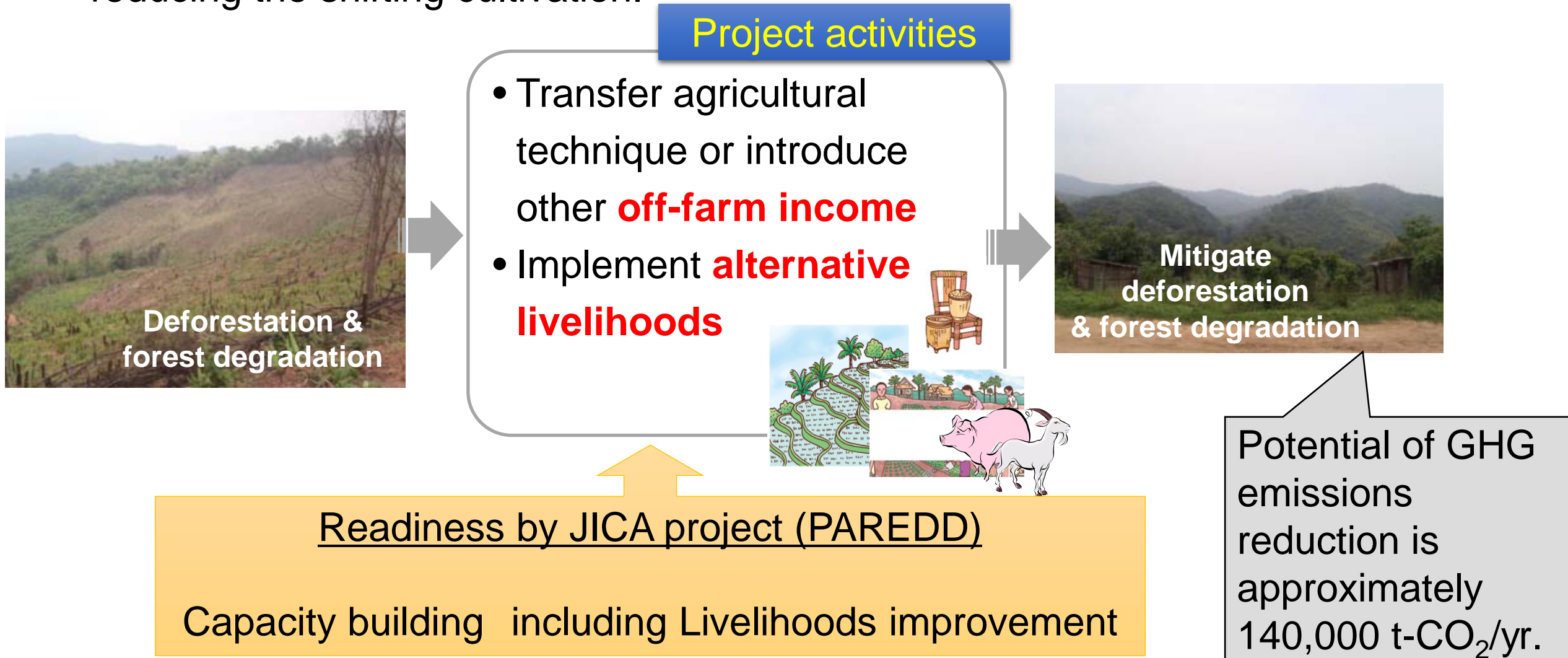
- Forest cover (% of land area) was decreased 72% in 1996 to 57% in 2010.
- Main driver is expansion of shifting cultivation.

2. Changes in forest cover before the project (Cont.)



3. Project design

- The project aims to mitigate deforestation and forest degradation by reducing the shifting cultivation.



5. Progress of the project – (1) Overview

JICA project (since 2011):
Readiness

JCM project (since 2014):
Demonstration & Full Implementation

Development of
community governance

Development of
Reference level

Development of
monitoring system

Others
(data collection, etc...)

Development of Draft PDD
& Peer-review

Development of
the methodology for
Forest Resources &
REDD+ activities

Forest
Resources &
REDD+
activities

3 years ?

- Revision of draft PDD
- Implementation of REDD+ activities

Monitoring

Reporting

Verification

Crediting

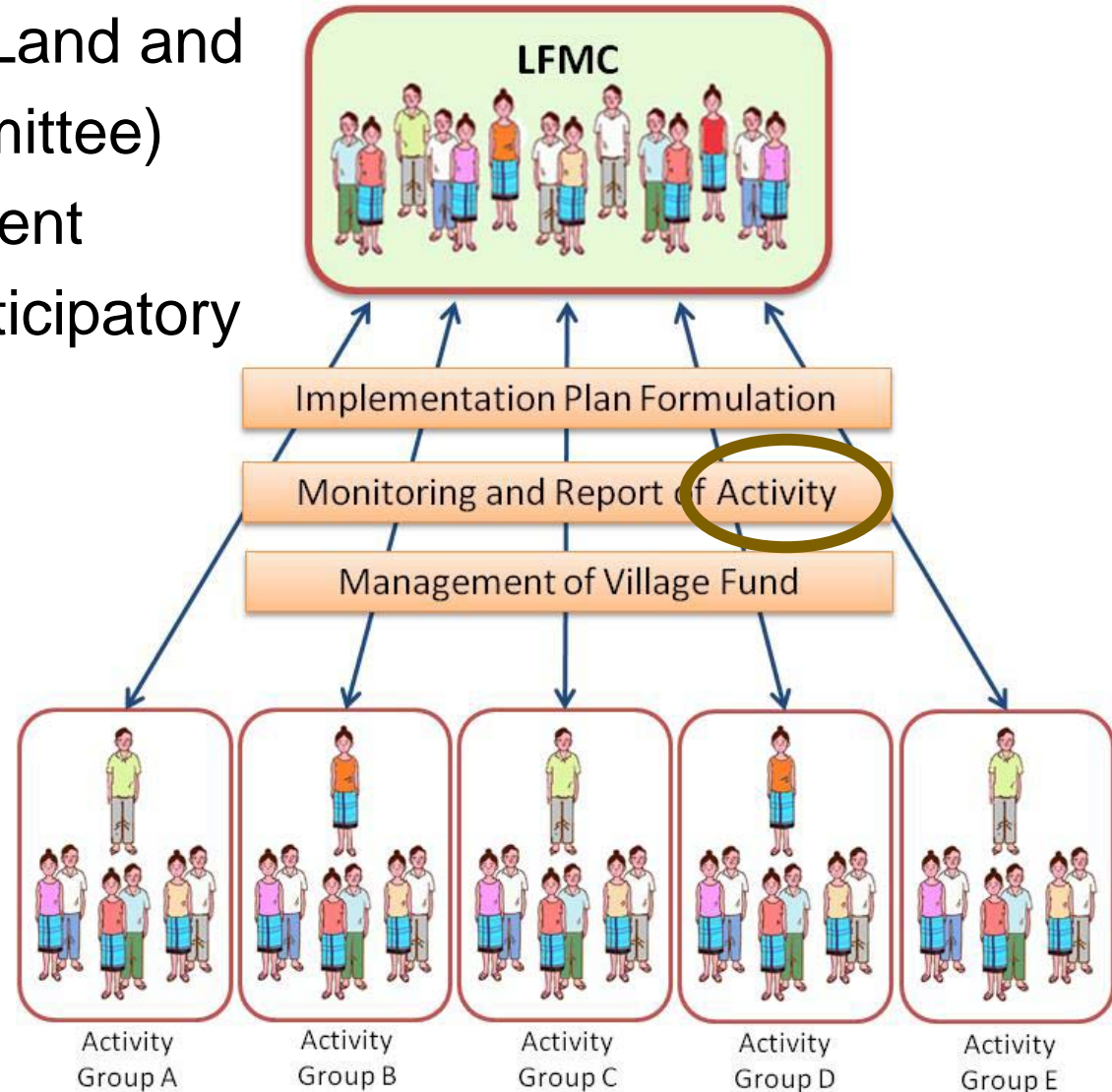
Activities at central, provincial
& village levels

Credits are expected to be issued
over several decades

5. Progress of the project – (2) Community governance

- In the project site, LFMC (Land and Forest Management Committee) was established to implement following activities in a participatory manner.

- ✓ Land use zoning
- ✓ Selection of alternative livelihoods
- ✓ Implementing and diffusing alternative livelihoods by using village fund



5. Progress of the project – (3) Reference level

■ Reference scenario

- Continue to expand shifting cultivation area
- Decrease fallow period

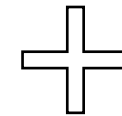
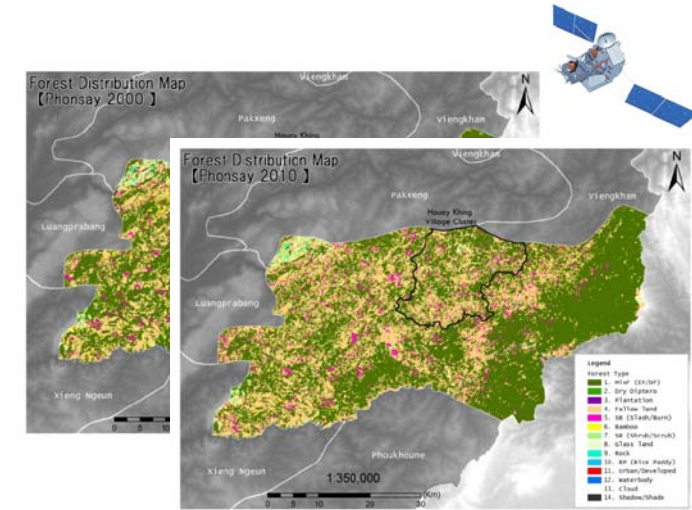
■ Method to estimate GHG emissions

- Equation: Based on the 2006 IPCC Guidelines
- Activity data (land area):
 - ✓ Historical: Estimated by remote sensing
 - ✓ Projected: Estimated by using model which takes into account social-economic information
- Parameters: Developed by field survey (a few data are obtained from the IPCC)

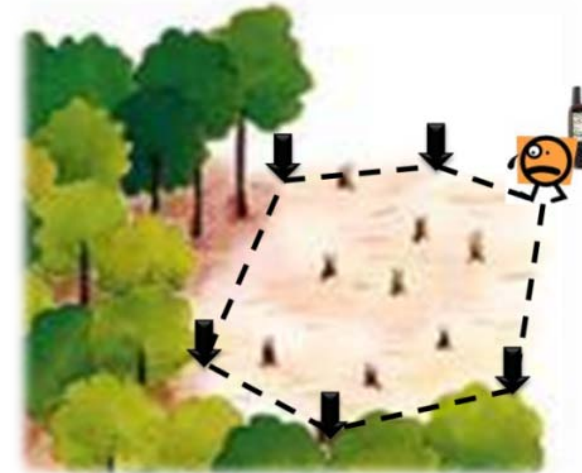
Year	Reference level GHG emissions (t-CO ₂ /yr)
1994	249,000
2000	222,000
2005	289,000
2010	216,000
2015	275,000
2016	286,000
2017	300,000
2018	317,000
2019	337,000
2020	359,000

5. Progress of the project – (4) Monitoring system

- Satellite imagery analysis
 - Use LANDSAT-TM to estimate changes in area of each forest type
- Participatory forest carbon monitoring



Participatory forest carbon monitoring enables local communities and peoples to improve environmental awareness and build a long-term forest management system.



6. Activities to be taken in FY 2015

Theme 1:
Institutional arrangement

Diffusion and
Sustainability
of JICA
program

Implement structure

Central level Joint Steering Committee (JSC)

Japan side

- Project members (which include university, private company and consultant)

Lao PDR side

- Central & Provincial Government
- National research institute
- Village-level stakeholders

Province/District/Village level

Technical adviser (National research institute)

↓
REDD+ technical team
(District officer, experts)

LFMC
(Village A)

LFMC
(Village B)

LFMC
(Village C)

LFMC
(Village D)

LFMC
(Village E)

LFMC
(Village F)

6. Activities to be taken in FY 2015

(1) Institutional arrangement

TOR of the JSC

- Discussion on technical and political issues
 - ✓ REDD+ implementing structure among all of participants
 - ✓ Activities/roles of each participants
 - ✓ Others (project permission, benefits distribution system among stakeholders, etc.)
- Development of draft REDD+ implementing strategy which takes into account sub-national REDD+



Participation

6. Activities to be taken in FY 2015

(2) Implementing structure

■ Establish the REDD+ technical team

- Purpose of the REDD+ technical team
 - ✓ Provide technical advice to villagers
 - ✓ Manage and facilitate REDD+ activities to villagers
 - ✓ Expand the REDD+ activities to other clusters.
- National research institute provides technical supports and training to the team.
- Villagers implement REDD+ activities in cooperation with the REDD+ technical team.



Our Reference level

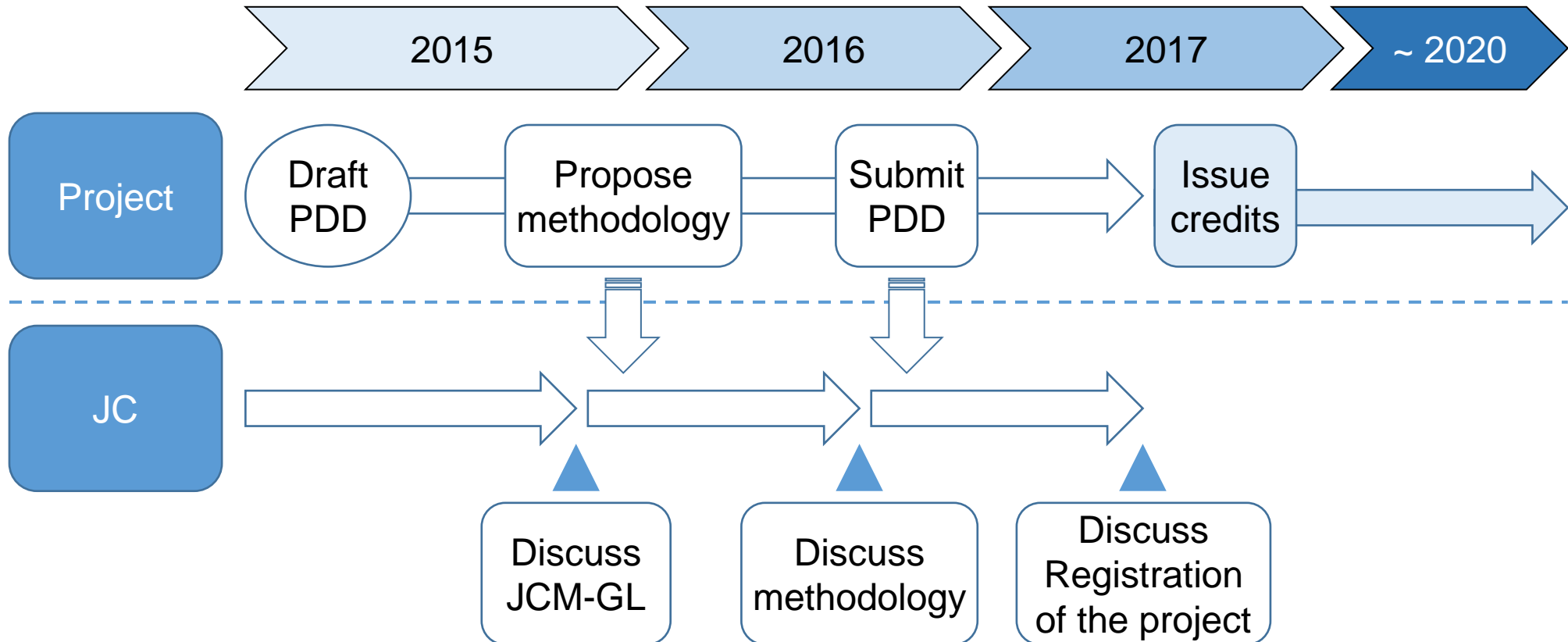
- (1) Carbon stock
- (2) REDD+ activities
- (3) participation



7. Future Plan

■ Early issuance of JCM credits

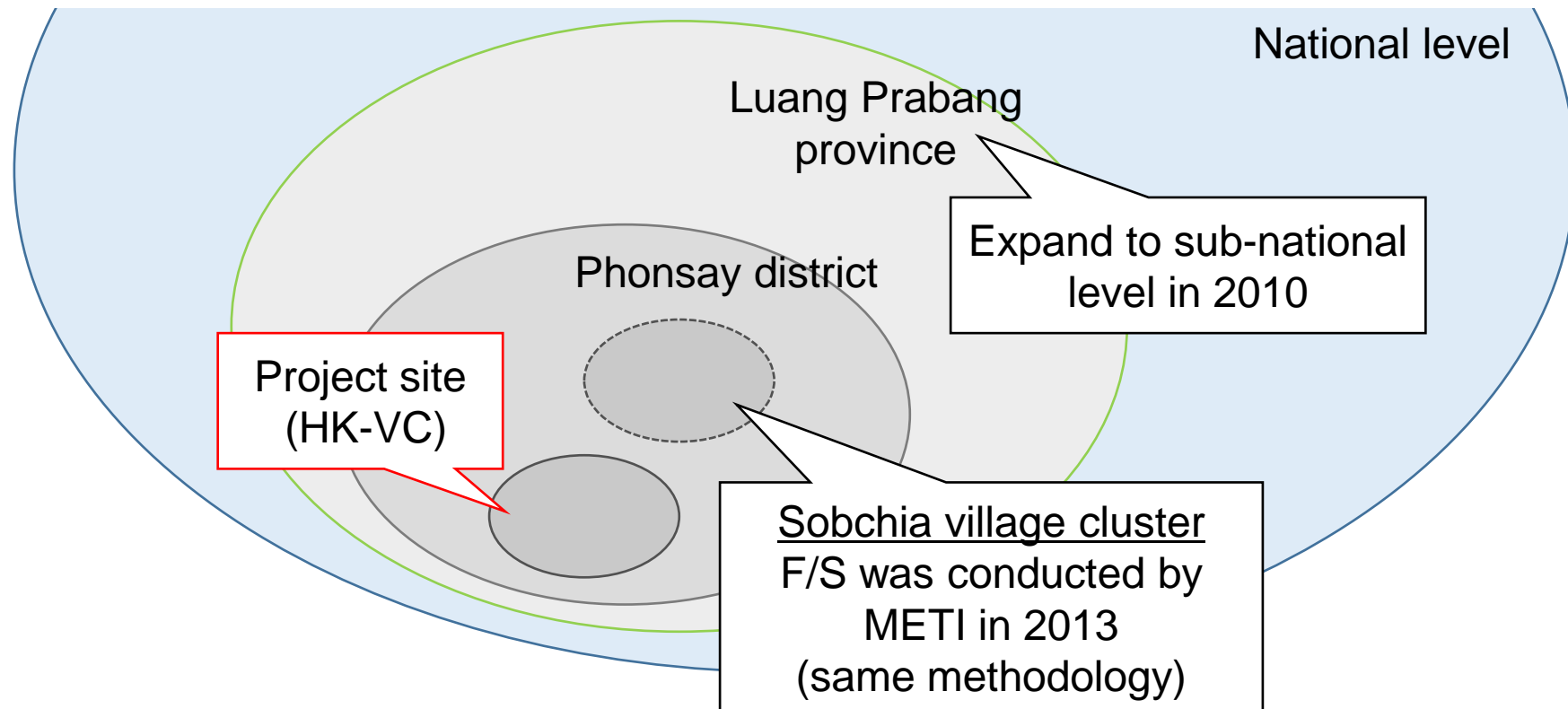
- JCM credits are expected to be issued in 3 years.



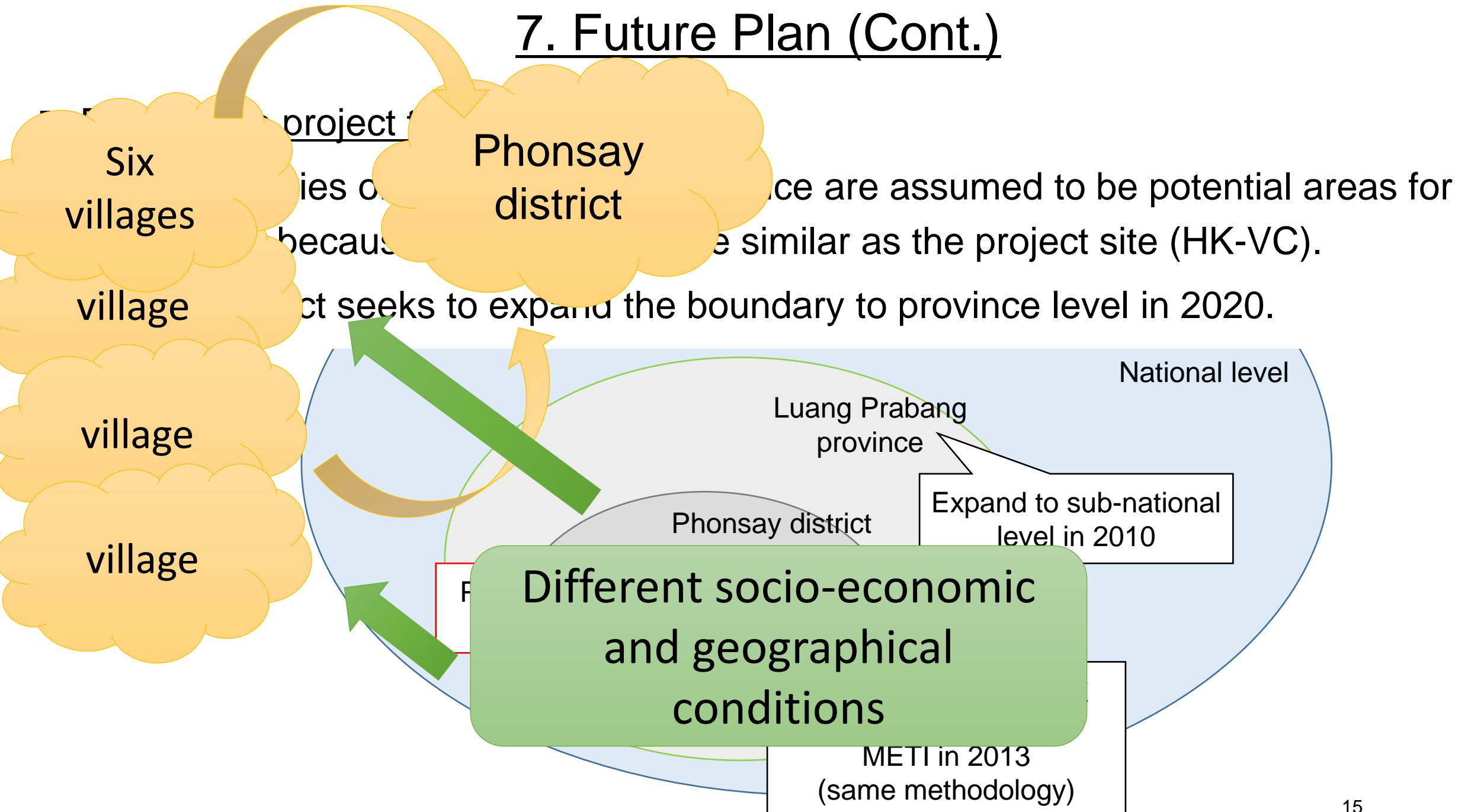
7. Future Plan (Cont.)

■ Expand the project to sub-national level

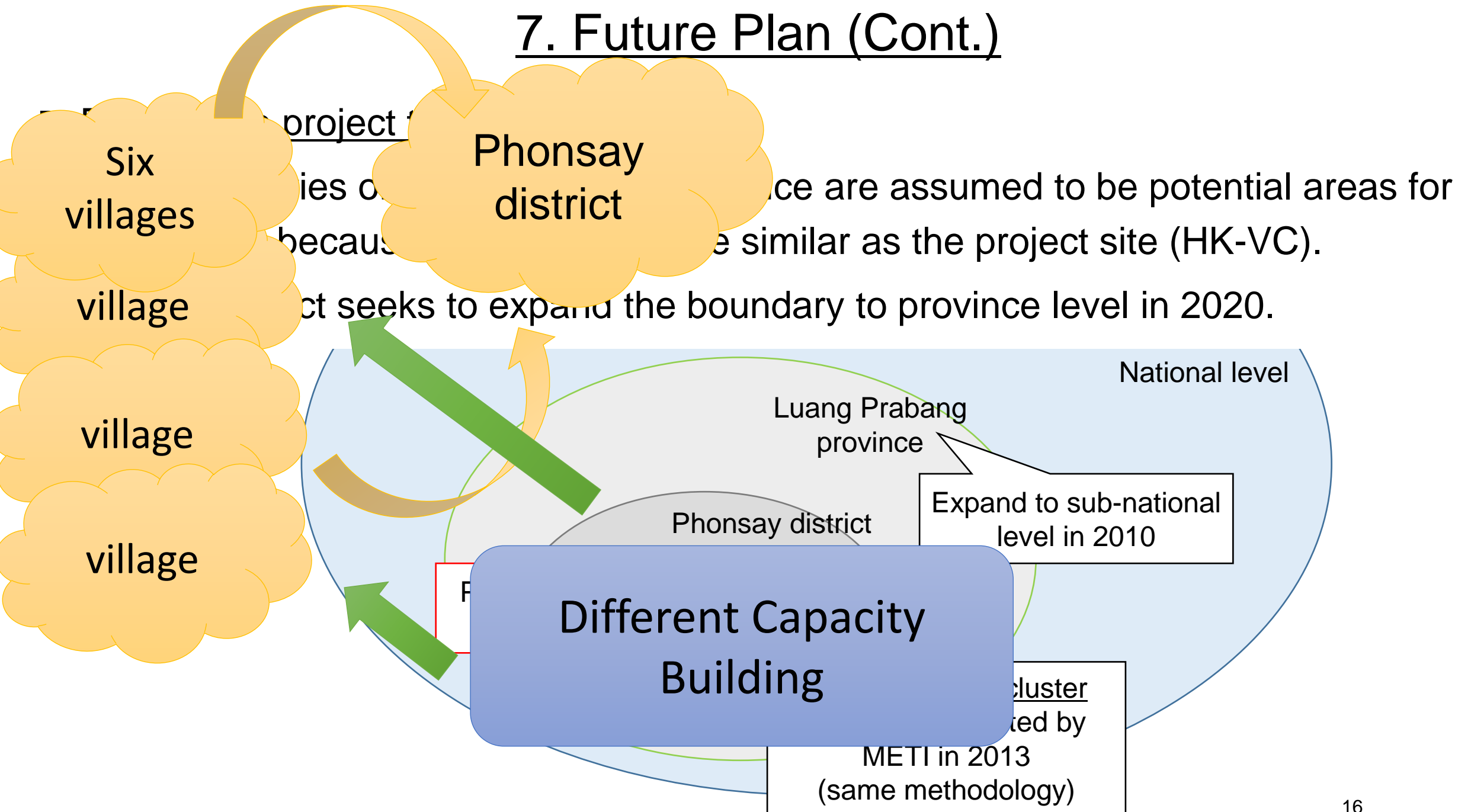
- All territories of Luang Prabang province are assumed to be potential areas for REDD+ because the conditions are similar as the project site (HK-VC).
- The project seeks to expand the boundary to province level in 2020.



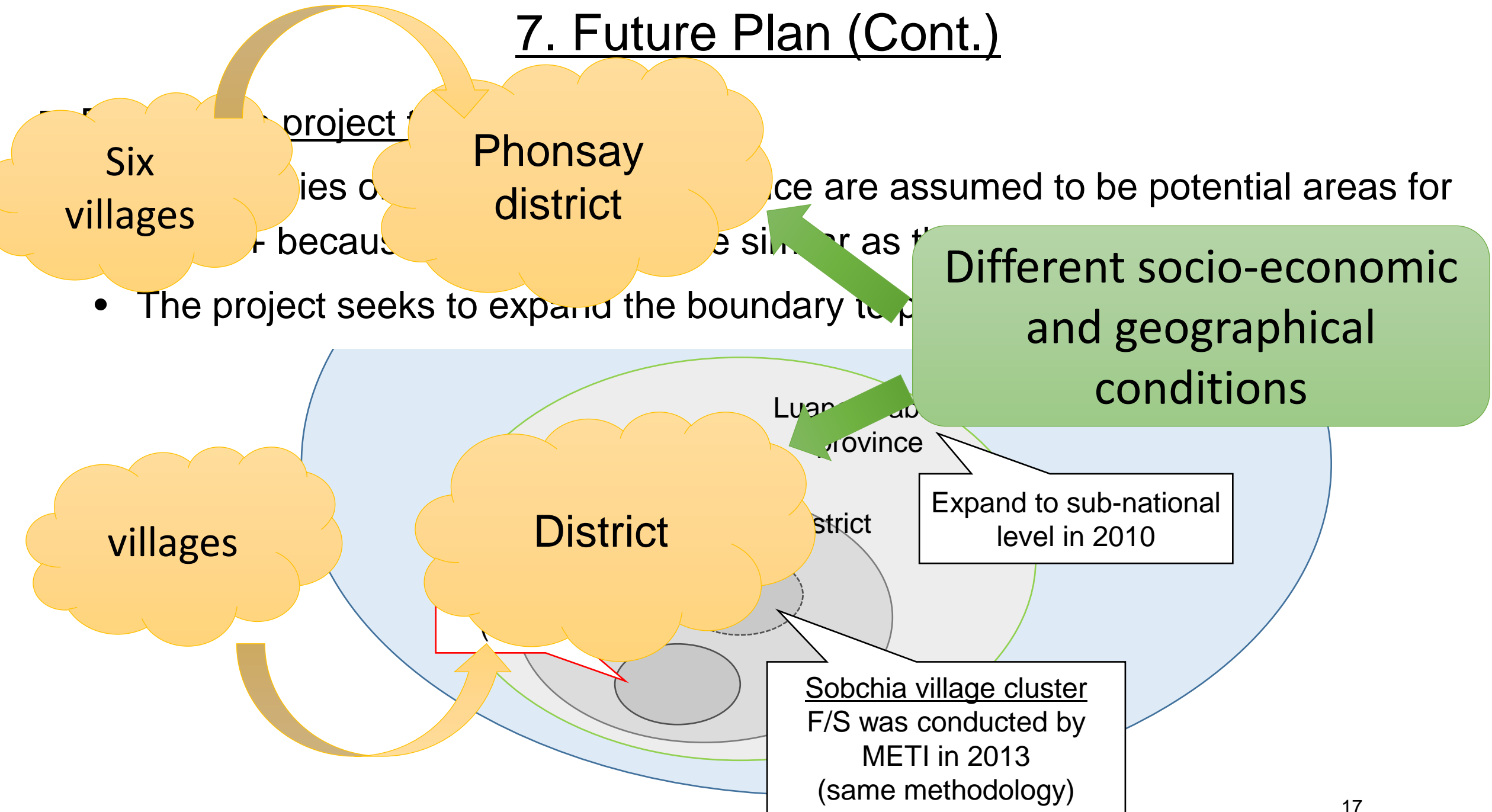
7. Future Plan (Cont.)



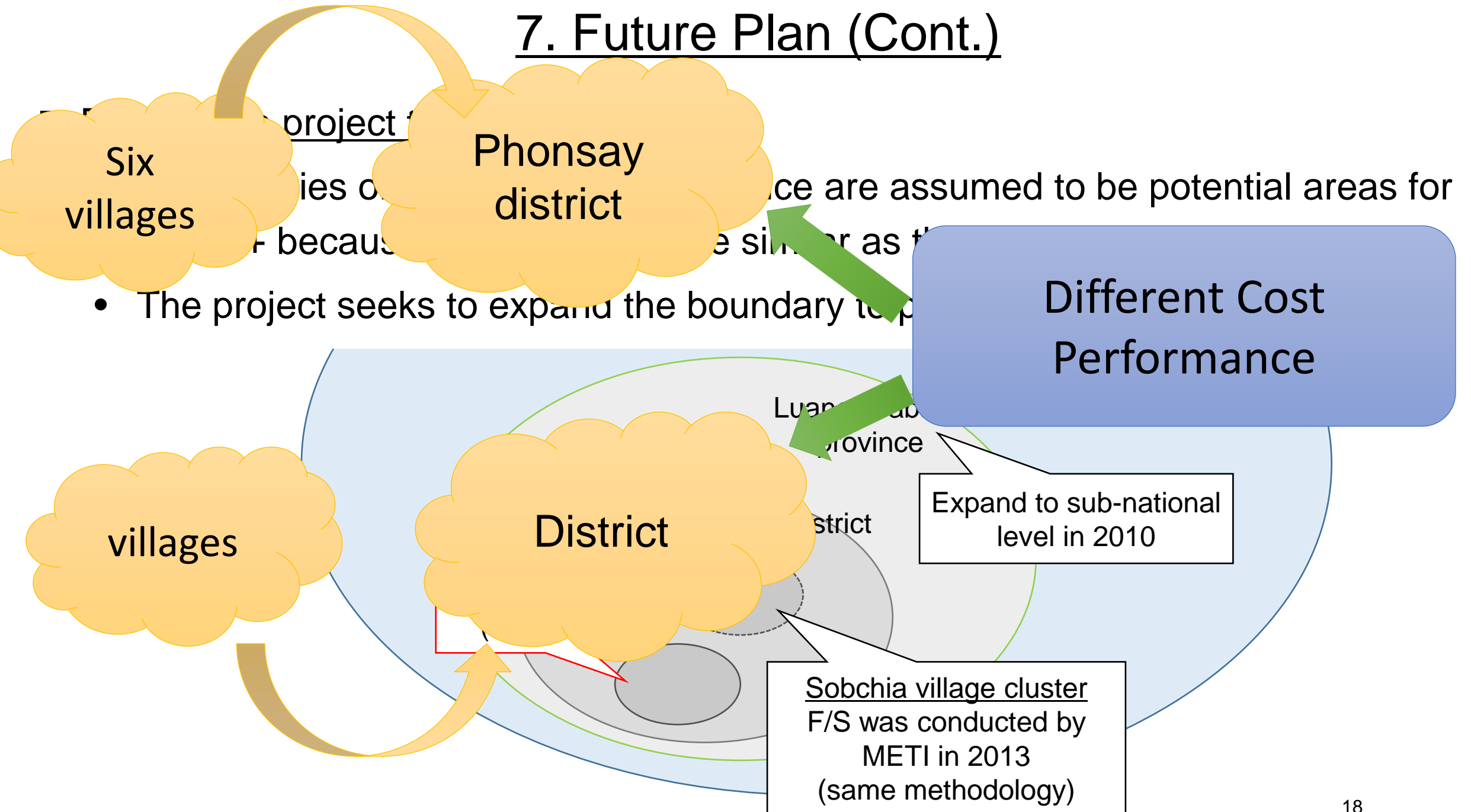
7. Future Plan (Cont.)



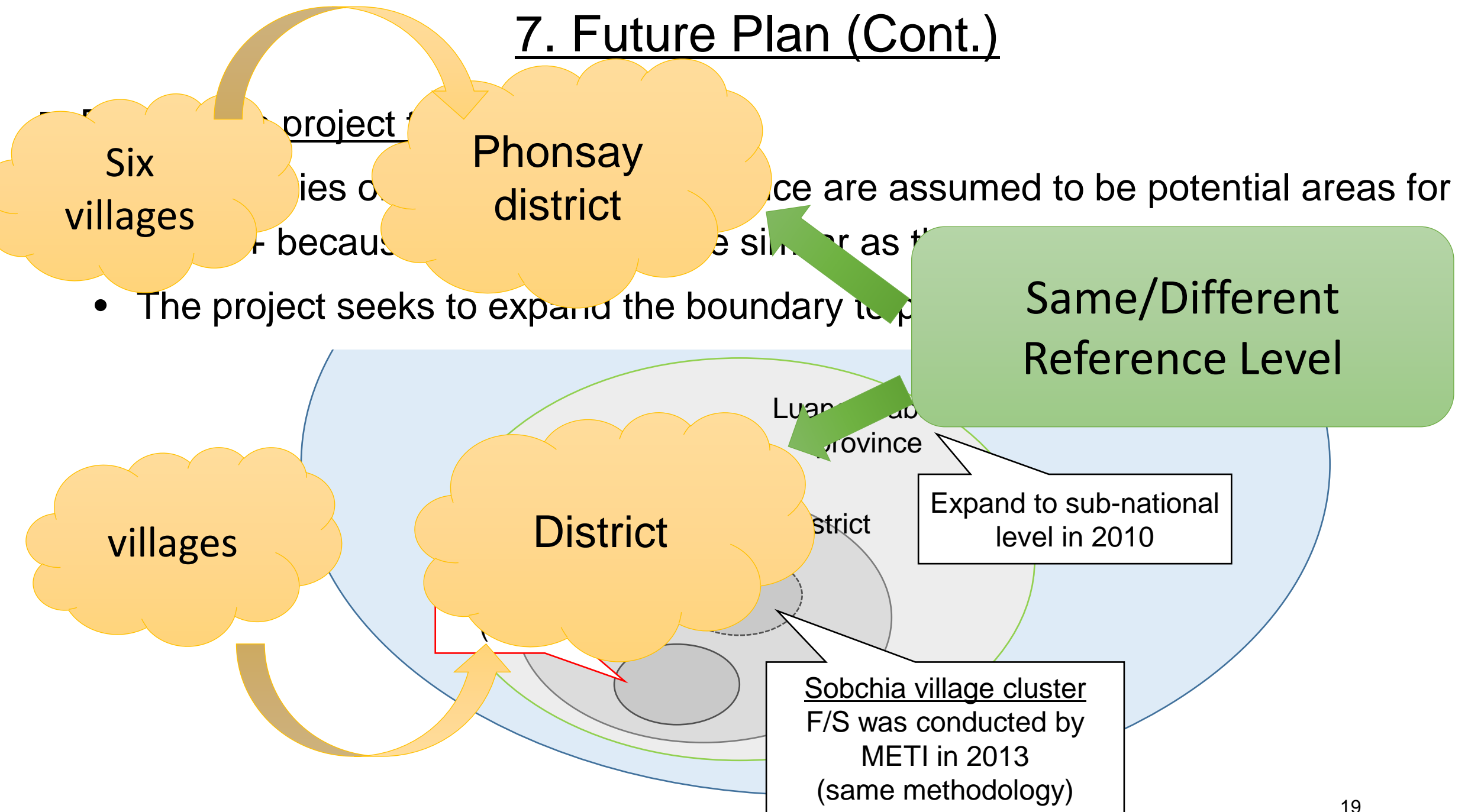
7. Future Plan (Cont.)



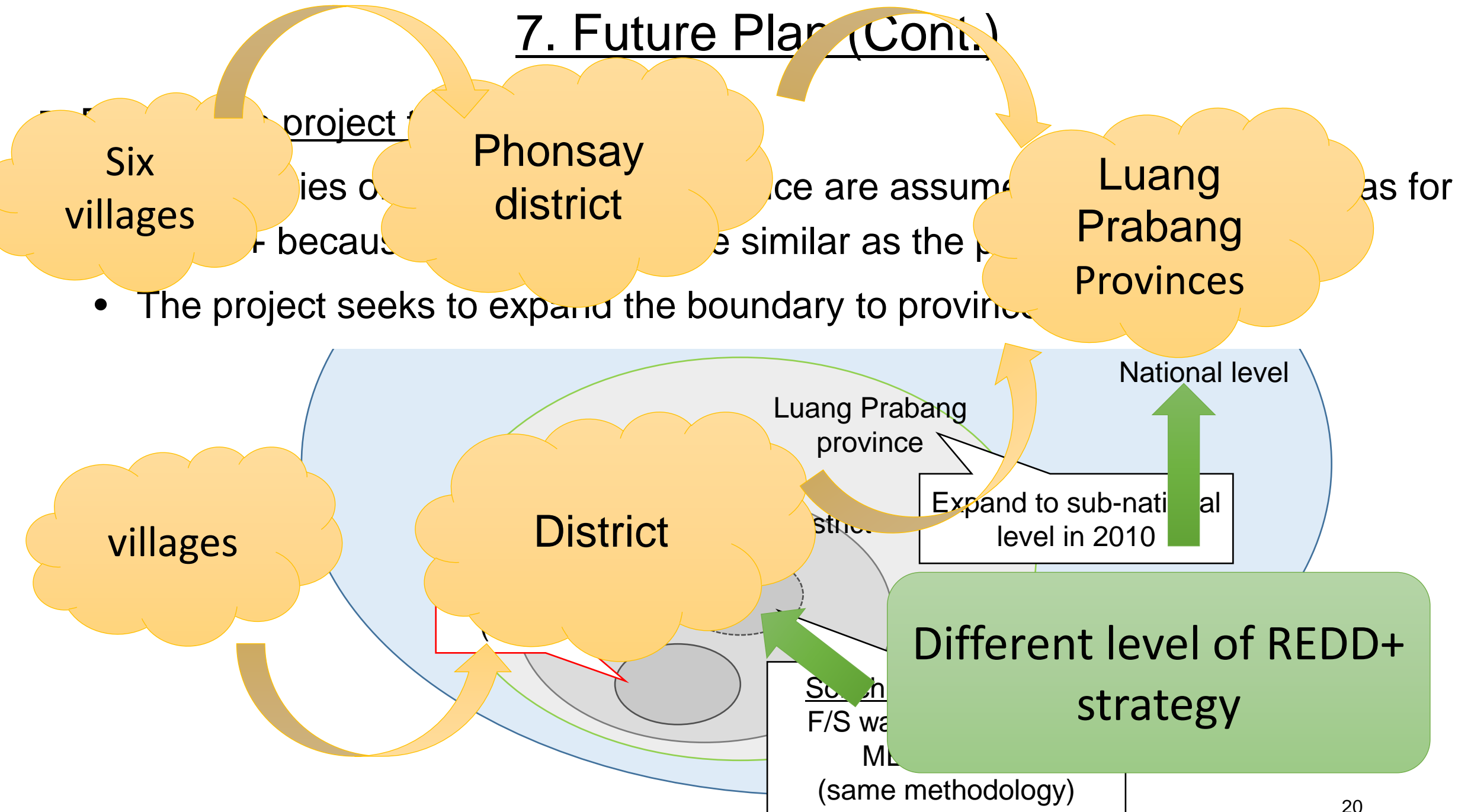
7. Future Plan (Cont.)



7. Future Plan (Cont.)



7. Future Plan (Cont.)



7. Future Plan (Cont.)

Six villages

Phonsay district

Luang Prabang Provinces

- The project seeks to expand the boundary to provinces

